

# GASSHIELD® BGF 615HF HIGH FLOW BULK FILTER PENTA® NICKEL MEDIA



The BGF 615HF is the **HIGHEST FLOW BULK GAS FILTER** in a **COMPACT DESIGN** for **MEGA-WAFER FABs**

## DESCRIPTION

Mott High Purity Bulk Filters provide 9-log filtration of particles down to 0.0025 µm resulting in particle-free gas. In addition, the flow versus differential pressure performance of the filter is equal or superior to the performance of competitive polymer products on the market today. Refer to flow rate data.



## APPLICATIONS

Mott provides the high-strength, all-metal solution to filtration requirements for gas flow streams at the gas pad. Mott bulk filters are ideally suited to the higher temperatures that can be encountered downstream of a purifier during heated dry down operations.

## OPERATING CONDITIONS

- » Maximum Operating Pressure: 400 psig (27.6 barg)
- » Maximum Operating Temperature for Inert Gas: 840°F (450°C)
- » Maximum Differential Pressure: 125 psid (8.6 bar)

## MATERIALS

- » Hardware: 316L SS
- » Filter Medium: Penta® Nickel
- » Wetted Hardware Surface Finish: 10 Ra, Electro-polished

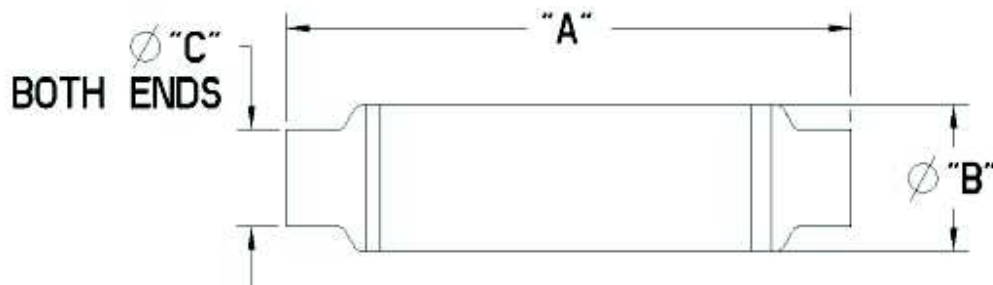
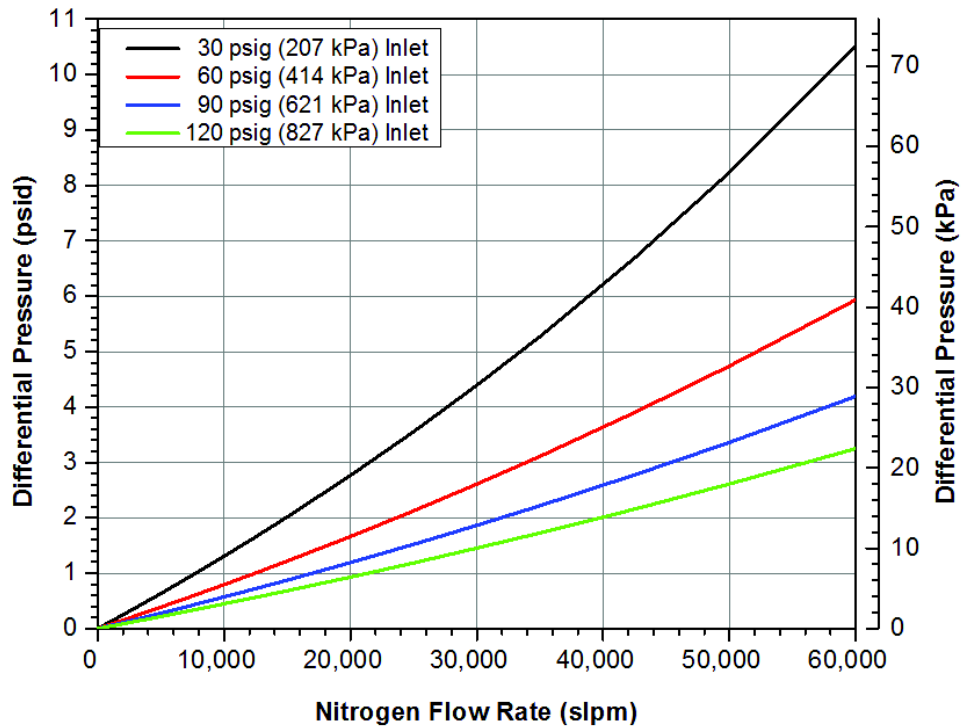
## SPECIFICATIONS

Particle Removal Size:	≥ 0.0025 µm
Filter Efficiency (Log Reduction Value):	9 LRV (99.9999999% reduction in particles). Confirmed at the most penetrating particle size of 0.08 µm per SEMI F38-0699 test method
Helium Leak Rating:	1 x 10 <sup>-9</sup> atm cc/sec
Moisture Contribution:	<10 ppb after 1 hour at low-flow ambient purge per SEMI F27 test method
Total Hydrocarbons:	Below detectable limits per SEMASPEC 90120396B test method
Particle Shedding:	Zero particle contribution above background (<1 particle/ft <sup>3</sup> ) per SEMIF43-0308 test method

# FLOW DATA

## Mott BGF-615HF Flow Rate vs. Differential Pressure

Typical Flow Curves as a Function of System Pressures



## ORDERING INFORMATION

Part Description	Part Number	Fitting Type	A Inches/mm	B Inches/mm	C Inches/mm
BGF-615HF-6TS-N-60M	6825149	6" Tube Stub	28.81/731.8	6.00/152.4	6.00/152.4
BGF-615HF-4TS-N-60M	6825150	4" Tube Stub	23.41/594.6	6.00/152.4	4.00/101.6
BGF-615HF-2TS-N-60M	6825151	2" Tube Stub	29.89/759.2	6.00/152.4	2.00/50.8

\*Custom designs and fittings available. Contact a Mott representative for more information.