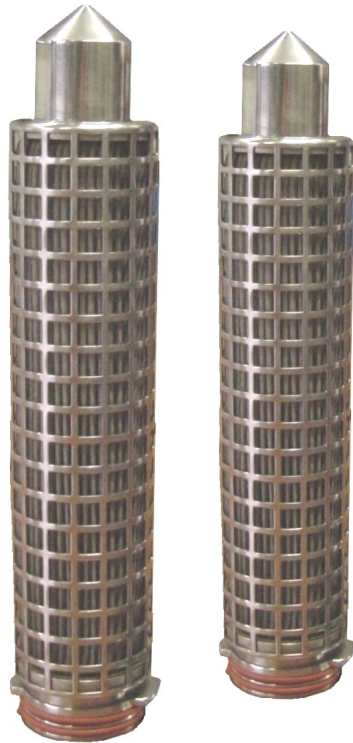


# SF series

FILTERING CARTRIDGES  
SINTERED FIBERS  
OD 2.3"-2.7" (63-68 mm)



## MAIN APPLICATIONS:

- FINE CHEMICAL
- PETROCHEMICAL
- MELTED POLYMERS
- OIL & GAS
- FOOD & BEVERAGE
- PHARMACEUTICAL
- MICROELECTRONIC
- HYDRAULIC
- GENERAL INDUSTRY

## CHARACTERISTICS:

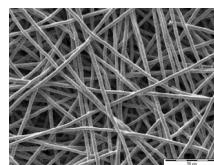
- High mechanical strength
- High temperature resistance
- Excellent chemical compatibility
- Pleated construction
- Cleanable
- Dirt holding capacity three time higher than conventional metallic cartridges
- Porosity and permeability double than sintered powder cartridges
- Flow-rate four time higher than conventional metallic cartridges
- No media migration
- 1935/2004/CE certification available upon request
- Filtration direction from outside to inside
- Thirteen end cap configurations available
- Two different construction materials available
- Two assembly technologies available
- Special design for melted polymers filtration available
- Suitable for both liquid and gas filtration
- Absolute filtration rating from 1 to 60  $\mu\text{m}$

## CORROSION RESISTANCE:

- 316L SS            Not suitable with Cl<sup>-</sup> Br<sup>-</sup> F<sup>-</sup>
- Hastelloy®        Suitable for HCl, HF, H<sub>2</sub>SO<sub>4</sub>



Brochure no: 025-SF-22-UK-4



# ASCO FILTRI

a **mott** company

**ASCO Filtri S.p.A.**

Viale delle Scienze, 8

20082 Binasco (MI) - Italy

Phone: +39 02 89703.1

Fax: +39 02 89703.410

E-mail: [info@ascofiltri.com](mailto:info@ascofiltri.com)

Web: [www.ascofiltri.com](http://www.ascofiltri.com)

# SF series

**FILTERING CARTRIDGES**  
**SINTERED FIBERS**  
**OD 2.3"-2.7" (63-68 mm)**

## TECHNICAL DATA

### DIFFERENTIAL PRESSURE

**Cartridges replacement:**  
**2.0 bar @ 25 °C**

**Max. allowable:**

**12 bar @ 25 °C (crimped)**

**15 bar @ 25 °C (welded)**

**103 bar @ 25 °C (polymers)**

### WORKING TEMPERATURE

**360 °C - 316L SS**

**600 °C - Hastelloy®**

### CONSTRUCTION MATERIAL

**Filter media / hardware:**

- 316L SS (type G, H & P)

- Hastelloy® (type H & P)

**Gaskets:**

- Buna-n max. 120 °C

- EPDM max. 120 °C

- Viton max. 230 °C

- Silicone max. 230 °C

- FEP max. 250 °C

- PTFE max. 250 °C

- KlingerSil max. 360 °C

### DIMENSIONS

**External diameter:**

**2.4" (60 mm) Crimped**

**2.7" (68 mm) Welded**

**Internal diameter:**

**1.0" (26 mm)**

**1.4" (36 mm) (only cod. 9)**

**Length:**

**10", 20", 30", 40", 50", 60"**

### FILTERING AREA

**10" 0.13 m<sup>2</sup>**

**20" 0.26 m<sup>2</sup>**

**30" 0.39 m<sup>2</sup>**

**40" 0.52 m<sup>2</sup>**

**50" 0.65 m<sup>2</sup>**

**60" 0.78 m<sup>2</sup>**

### Flow-rate / Delta-P data:

Filtration (µm)	Liquids			Air	Steam 6 bar
	1 cP	25 cP	70 cP	0.018 cP	0.012 cP
01	1.8	0.10	0.04	20	55
03	2.0	0.15	0.05	25	60
05	2.5	0.5	0.15	30	80
10	3.0	1.5	0.5	30	80
20	3.0	1.7	1.2	40	100
30	3.5	2.0	1.7	40	120
40	3.5	2.0	1.7	50	150
60	3.5	2.0	1.7	50	150

Liquid flow-rate (m<sup>3</sup>/h) - Air flow-rate (Am<sup>3</sup>/h) - Steam flow-rate (kg/h) - Clean Delta-P 0.05 bar.

Flow-rate valid for 10" long cartridges.

For gas different than air: DP = 0.05 x gas viscosity (cP) / 0.018 cP (air).

Flow-rate valid for clean water and air, reduce the flow-rate according to the application.

### Filtration efficiency:

Filtration (µm)	Liquids (µm)			Gas (µm)		
	90%	98%	99.9%	90%	98%	99.9%
01	0.6	0.9	1	0.15	0.25	0.3
03	0.7	1	3	0.2	0.3	1
05	2	3	5	0.6	0.8	2
10	3	5	10	0.7	1	3
20	7	10	20	2	3	5
30	15	20	30	3	5	10
40	20	30	40	7	10	15
60	30	45	60	10	15	20
75	40	50	75	15	20	30

### Ordering information:

SF	G	P	10	-	20	-	S	0	-	V	03						
<b>End caps seal:</b>						<b>Materials:</b>			<b>End caps:</b>			<b>Gaskets:</b>		<b>Media code:</b>		<b>Options</b>	
G: crimped						S: 316-SS			0: DOE			N: Buna-N		Internal use		: none	
H: welded						H: Hastelloy			3: SOE 222 / flat			E: EPDM				M: external spring	
P: polymers									6: SOE 226 / flat			V: Viton				F: food grade	
<b>Type:</b>									7: SOE 226 / fin			S: silicone					
P: pleated									8: SOE 222 / fin			T: PTFE (only DOE)					
<b>Filtration rating:</b>									9: SOE 225 / fin			F: FEP					
01: 1 µm									T0.5: SOE 1/2" Gas-m			K: KlingerSil (only DOE)					
03: 3 µm									T1: SOE 1" Gas-m								
05: 5 µm									T1.5: SOE 1.1/2" Gas-m								
10: 10 µm									N0.5: SOE 1/2" NPTM								
20: 20 µm									N1: SOE 1" NPTM								
30: 30 µm									N1.5: SOE 1.1/2" NPTM								
40: 40 µm																	
60: 60 µm																	
<b>Length:</b>																	
10: 10"			40: 40"														
20: 20"			50: 50"														
30: 30"			60: 60"														

Different filtration rating available upon request.

External spring: as option for 10" and 20"; standard for 30" and 40"; valid only for G version.

Gaskets: gaskets on sales documents will have a separate P/N from cartridge.

We reserve the right to change the specifications of this specification without notice.

**ASCO Filtri S.p.A.**

Viale delle Scienze, 8

20082 Binasco (MI) - Italy

Phone: +39 02 89703.1

Fax: +39 02 89703.410

E-mail: info@ascofiltri.com

Web: www.ascofiltri.com

**ASCO**  
**FILTRI**  
 a mott company