

BIOMASS FILTRATION



HyPulse® GSV process filters for biomass plants utilize patented blowback technology for continuous filtration. Porous elements are pulsed in sections and cleaned while the unit remains on-line. Maintenance, downtime, utility consumption and safety concerns are significantly reduced because you rarely need to open up the filter for maintenance and cleaning.

With a wide selection of alloys to choose from, such as stainless steel, Hastelloy, and Monel, Mott filters can accommodate a wide range of temperature and chemistry requirements.

Not sure if this technology is right for your process? Ask a Mott representative about lab testing options to prove feasibility for your application.



MOTT GAS FILTER SPECIFICATIONS

Variables	Specifications
Temperature Ranges	0-1700° F
Pressure Drop Across Filter	0.1-2 PSI
Filter Media Grade Options	0.1-100 µm
Available Alloys	316L SS, 316 SS, 304L SS Nickel 200, Monel® 400, Inconel® 600 Hastelloy® X, C-276, C-22
Typical Particle Capture %	99.9%



3 REASONS TO USE A MOTT FILTER FOR BIOMASS FILTRATION

1. TEMPERATURE RESISTANCE

Mott filters can withstand years of operation at extreme temperatures without cracking or noticeable deterioration.

2. PATENTED BLOWBACK TECHNOLOGY

Mott filters can be monitored and managed from the comfort of a control room without the need for manual operator intervention, while also significantly reducing utility gas consumption.

3. REDUCED MAINTENANCE AND DOWNTIME

Due to the longevity and reliability of porous elements and the automated nature of a Mott filter, you can experience months or years of continuous operations without having to take the filter off line for maintenance.

RELY ON US FOR AS MUCH OR AS LITTLE AS YOU NEED

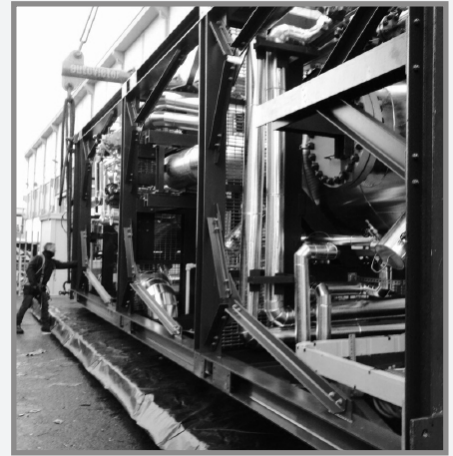
Depending on your needs, we can supply just the filter elements, the elements and ASME stamped vessel, or a complete turnkey system, including the filter vessel and frame, piping, valves, instrumentation, and controls.



ELEMENTS AND ENGINEERING



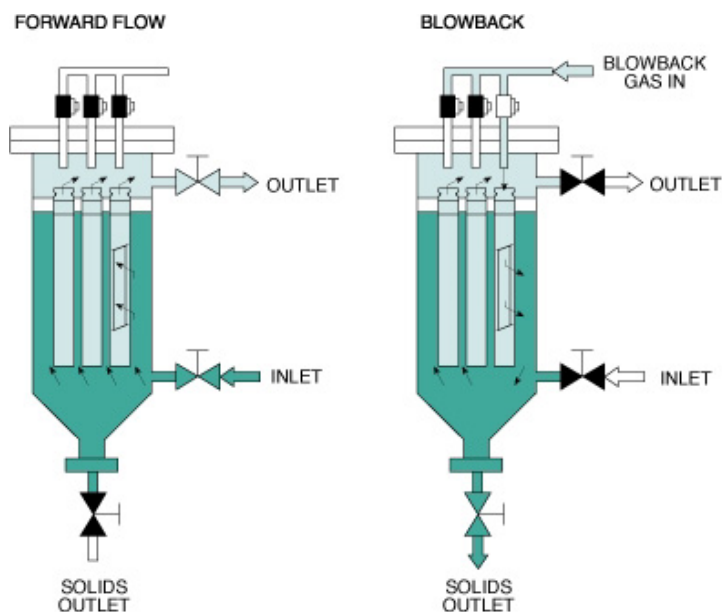
VESSEL AND INTERNALS



FULL TURNKEY SKIDS

OPERATIONS AND BLOWBACK CYCLE

Once the elements inside of the vessel have reached terminal or specified pressure drop, the blowback cycle initiates. The blowback gas valve is opened one plenum at a time. Sonic gas pulses discharge built-up cake from the elements. This plenum is then completed and the filter automatically proceeds to the next plenum.



mott
MISSION CRITICAL PRECISION

MOTT CORPORATION
84 SPRING LANE
FARMINGTON CT 06032
860-747-6333 | TELEPHONE
800-289-6688 | TOLL FREE US

INFO@MOTTCORP.COM
MOTTCORP.COM



REV BIOMAS 1219
©2019, Mott Corporation